



Pump specifications		
Type	ZD 900	ZD 600
Design	with gear casing	with gear casing
Max Capacity	95 m ³ /h	65 m ³ /h
Max Discharge head	20 mwc	20 mwc
Max Suction head	9.6 mwc	9.6 mwc
Connecting parts	4"/6"	4"/6"
Weight (empty)	Ca. 850 kg	Ca. 850 kg
Electric motor	5,5 kW	5,5 kW

ZD 600 AND ZD 900

After many years of close cooperation, the Belgian Clasal took over the piston pump section from Geho ZD from WEIR Minerals Netherlands BV. With this lies design, production and distribution of the original ZD pumps in the hands of Clasal.

The GEHO ZD series is a twin-cylinder quadruple-acting crankshaft-driven piston pump. The GEHO design is purpose build contractor proven and is extremely suitable for wellpoint dewatering by gravity or vacuum and for horizontal dewatering (drainage).

Advantages of a ZD piston pump

- Constant water and air flow, independent of suction and discharge head
- Self-priming with a suction lift (vacuum) of 9.6 mwc without the aid of an separate power absorbing vacuum pump
- Permanent high efficiency minimizing energy consumption
- About twice as efficient as a conventional vacuum priming impeller pump
- Robust design for ease of transportation and handling
- Rapid and economical maintenance and low spare parts usage
- economical and longer carefree service life reducing overall project costs
- Unprecedented high availability allowing continuous and unattended operation
- accessibility for ease of inspection and maintenance which require no special skills
- Resistant to brackish water
- Permit universal application. Depending on soil conditions, up to 100 wellpoints and up to 300 metres of header pipe can be connected to a single pump
- Can run dry without causing damage to the pump



Clasal controls the complete line of production

- Full control over the entire production line
- More than 100 years of experience as manufacturer of piston pumps
- Every pump is extensively tested
- Use of wear-resistant and durable materials
- Own foundry which is ISO 9001 certificated

Why a ZD pump from Clasal?

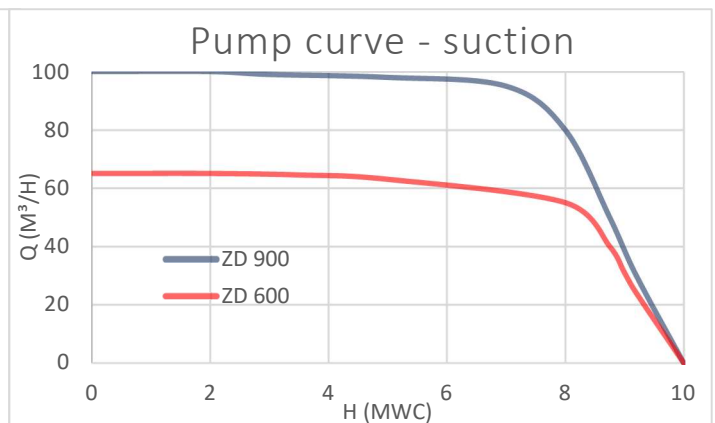
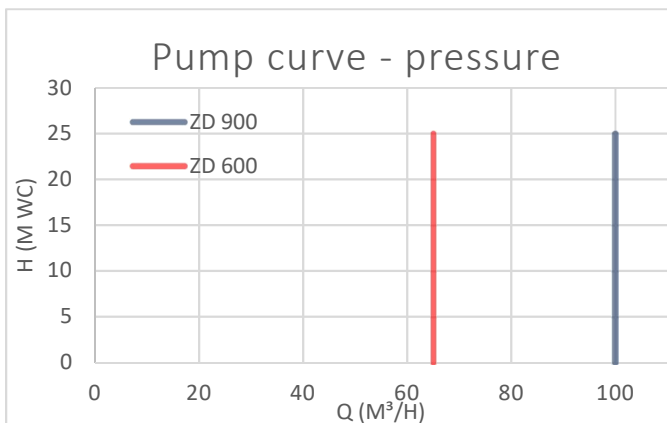
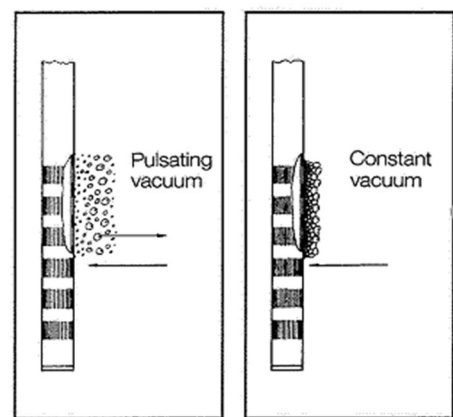
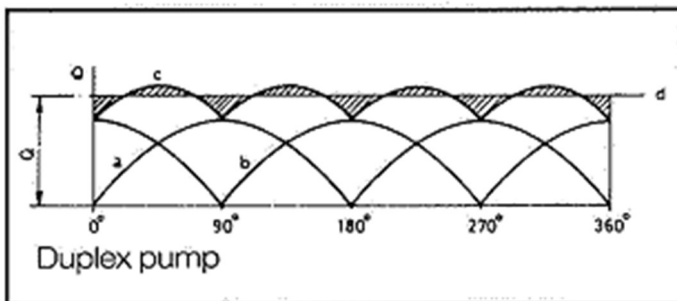
- Compact and light, yet large in capacity, efficiency and service life
- Original GEHO spare parts

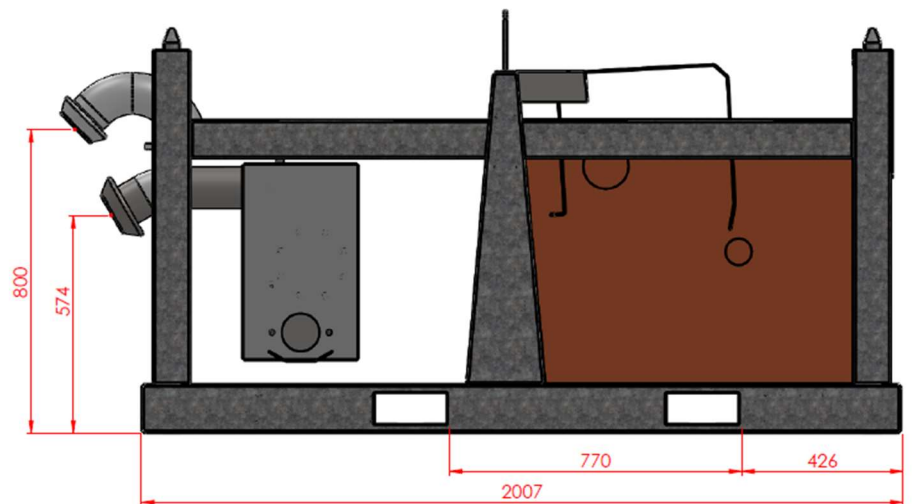
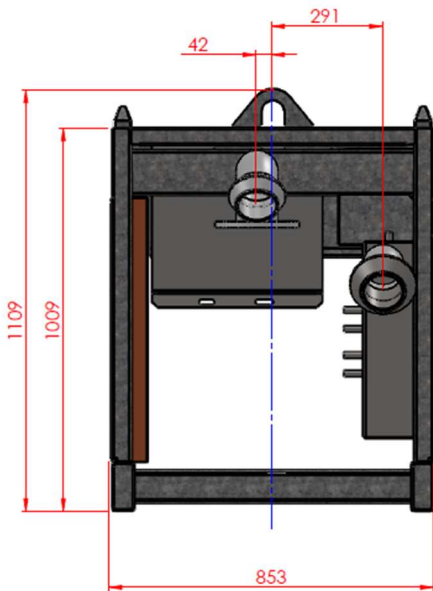
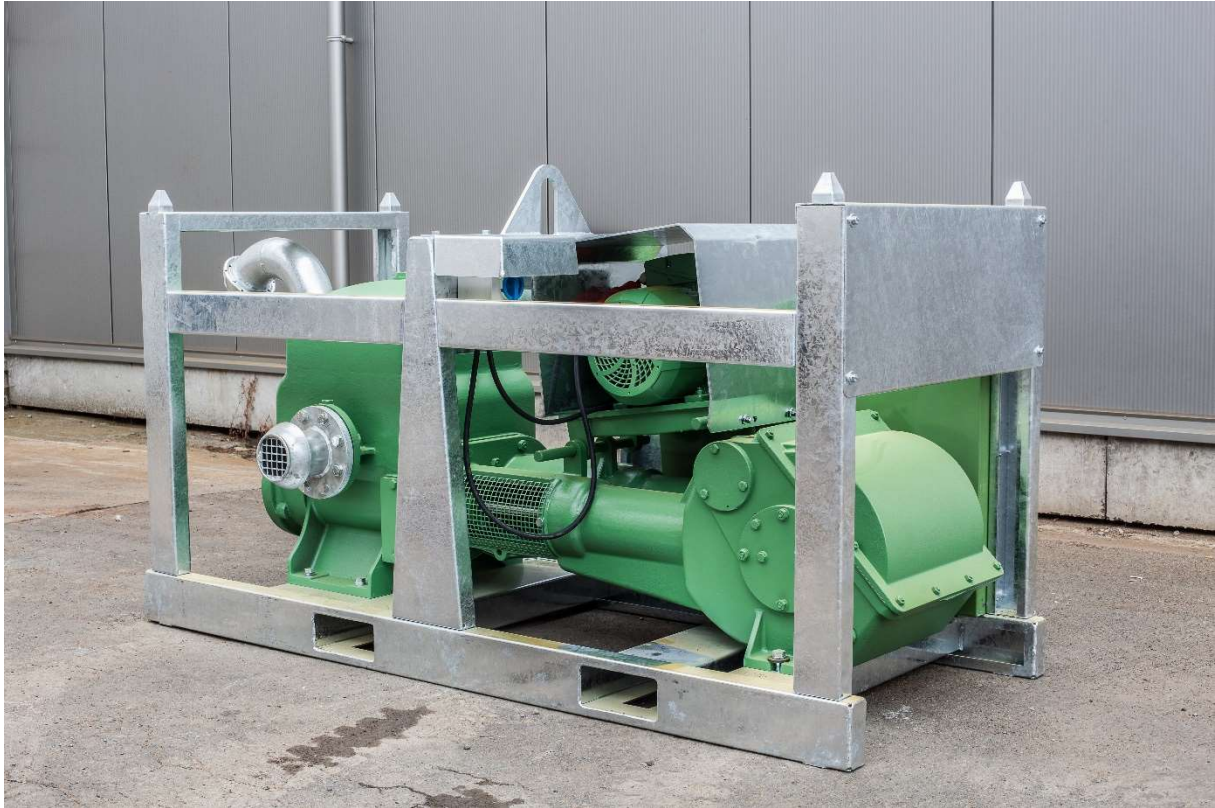
STANDARD TECHNICAL SPECIFICATIONS FOR THE ZD 600 AND ZD 900

Gearbox	Tough, compact construction with integral single helical precision gears
Lubrication	Self-contained oil splash lubrication
Piston discs	Wear resistant high molecular polyethylene
Cylinders	Stainless steel, easy replaceable
Piston rod	abrasion and corrosion resistant hard surface piston rods
Valve seats	Bronze, saltwater resistant
Valve system	Rubber discs with stainless steel guides
Gearbox, pump body	Alloyed cast iron
Inspection covers	Covers at the side of the pump body for cleaning
Cross head	Attached to the connecting rod with sleeve bearings
Crankshaft	Antifriction type drive shaft and crankshaft bearings

Operational characteristics

Water, air or water and air mixtures are primed and discharged 4 times per crankshaft revolution. Two crankshaft driven pistons are arranged in a Vee at 90°, so that the four piston strokes for each revolution follow in regular succession. The crank timing produces a moderate pulsating type action in the dewatering line that prevents clogging of the wellpoint strainers and achieves priming from greater depths.







Bronze valve seats and optimal hydraulics ensure the highest efficiency and the best vacuum.



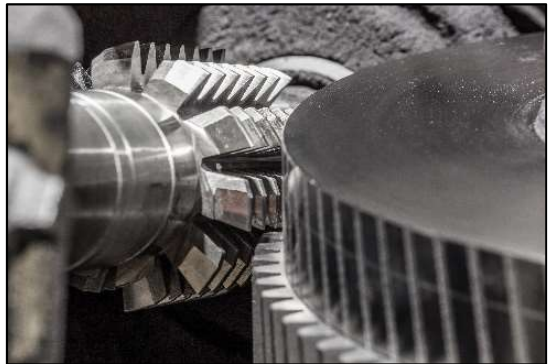
All parts are finished at Clasal using high-tech machines.



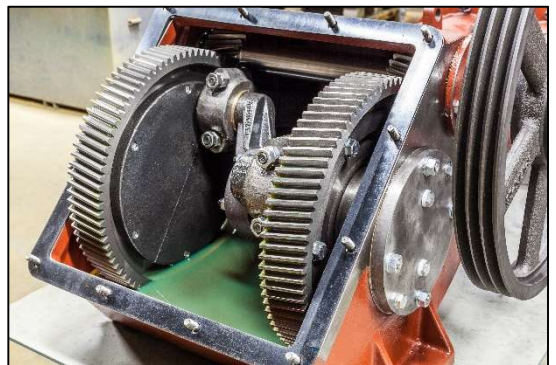
Clasal can use its own foundry.



Because we have all the technology in-house, we can always guarantee the same top quality.



Gear wheels are finished in our own workshop.



The single, high-precision gears ensure quiet operation.